

PATIENTS with EARLY SYMPTOMS of FRIEDREICH'S ATAXIA

**age 10 and above needed for an MRI study
to evaluate the chemistry and connectivity of the brain and
spinal cord in Friedreich's ataxia**

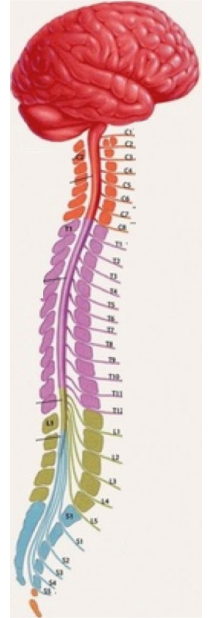
**at the Center for Magnetic Resonance Research at
University of Minnesota**

You will lie in the scanner for ~1.5 hour while listening to the music
of your choice. Reimbursement for travel expenses is available and
you will be compensated for your time.

Please note that we cannot scan you if you have Harrington rods,
and we cannot scan people with diabetes at this time.

If you are interested or have questions, please call

Diane Hutter @ (612) 625-2350 or email hutte019@umn.edu.



PATIENTS with EARLY SYMPTOMS of FRIEDREICH'S ATAXIA

**age 10 and above needed for an MRI study
to evaluate the chemistry of the brain and spinal cord in
Friedreich's ataxia**

**at the Center for Magnetic Resonance Research at
University of Minnesota**

You will lie in the scanner for ~1.5 hour while listening to the
music of your choice. Reimbursement for travel expenses is
available and you will be compensated for your time.

Please note that we cannot scan you if you have Harrington rods,
and we cannot scan people with diabetes at this time.

If you are interested or have questions, please call

Diane Hutter @ (612) 625-2350 or email

hutte019@umn.edu.

